

# Infuser Irrigation Pump Veress Needle Anti-Fog

2015.8.11

## Pump

- **Apply pressure** to an irrigation solution bag to support high pressure or high flow of irrigation solutions during surgery.
- These Irrigation Pumps utilize pressurized gas to provide irrigation pressure up to 700mmHg.
- The user controls the flow rate using a roller clamp on the irrigation set.
- The maximum flow rate is determined by the viscosity of the fluid, the characteristics of the irrigation set and the pressure applied.



## Pump



- ON/OFF switch, to inflate the air bladder.
- Pressure regulator knob, for adjustment of desired operating pressure.
- Rapid deflation switch
- Pressure gauge, for display of operating pressure.
- Latch, to hold the cover in closed position while in use.
- Air bladder (behind the cover)
- Transparent cover
- Air source connector, to mate with the desired gas source.

## Pump

- **Indications:**

The Irrigation Pump is intended for **rapid delivery** of irrigation solutions during surgical procedure where flow rate precision is not required.

- **Contraindications**

Do not use for infusion of blood, IVs, or for hysteroscopy

## Pump



IP-1000

IP-2000

- 1 Liter Pressure Infuser Irrigation Pump. (IP-1000, 1 Liter and IP-2000, 2 Liter)
- Takes standard irrigation bag, 500 to 1000ml
- IV pole mountable (3/4" to 1&1/2")
- Locking pressure adjustment knob
- Comes with 12' of gas source tube
- Pressure is automatically maintained on the bag as fluid is depleted.

## Specification of Lagis Irrigation Pump

Input	Compressed air, oxygen or nitrogen Do not exceed 60 psi.
Gauge accuracy	± 30 mmHg
Operating Pressure	0-700 mmHg
Operating Temperature	+ 10° to + 40°C
Storage Temperature	+ 5° to + 60°C
Compatible Fluid Bags	Flexible bags, supplied by most manufacturers are compatible with the Irrigation Pump. Rigid and semi-rigid containers are not compatible.

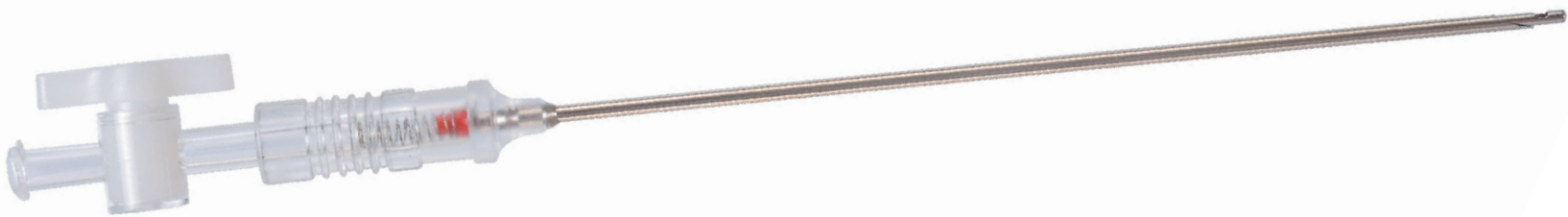
## Trouble Shooting

PROBLEM	CAUSE	SOLUTION
No Irrigation	Infuser not hooked up to gas source.	Connect infuser to gas source.
	Unit is not "ON".	Flip ON-OFF Switch to "PRESSURIZE".
	Irrigation pressure is set to zero.	Pull knob and turn clockwise to reach desired pressure. Push to lock.
	Fast Deflate switch is "ON"	Flip Fast Deflate switch to "OFF".
	Kinked tubing.	Straighten or replace tubing.
	Fluid bag is empty.	Replace fluid bag.
	Fluid line clamp(s) is closed.	Open clamp(s).
	Bladder Bag or internal air leak.	Service required.
Air Bladder not deflate.	ON-OFF Switch is not "OFF".	Flip ON-OFF Switch to "DEPRESSUREIZE".
	Fast Deflate switch is "OFF"	Flip Fast Deflate switch to "ON".
	Switch damaged.	Service required.
	Internal problem.	Service required.
Leakage of solution	Bag not spiked securely.	Secure spike in bag.
Unable to adjust pressure to 500 mmHg or higher.	Incorrect pressure at the air source.	Adjust pressure of air source to 3.0 To 4.4 bar (45 to 65 psi)
	Damaged Regulator knob Or Pressure Gauge	Service required.
Unable to reduce pressure.	Unit is not "OFF".	Turn ON-OFF Switch to "DEPRESSURIZE"





# VERESS NEEDLE



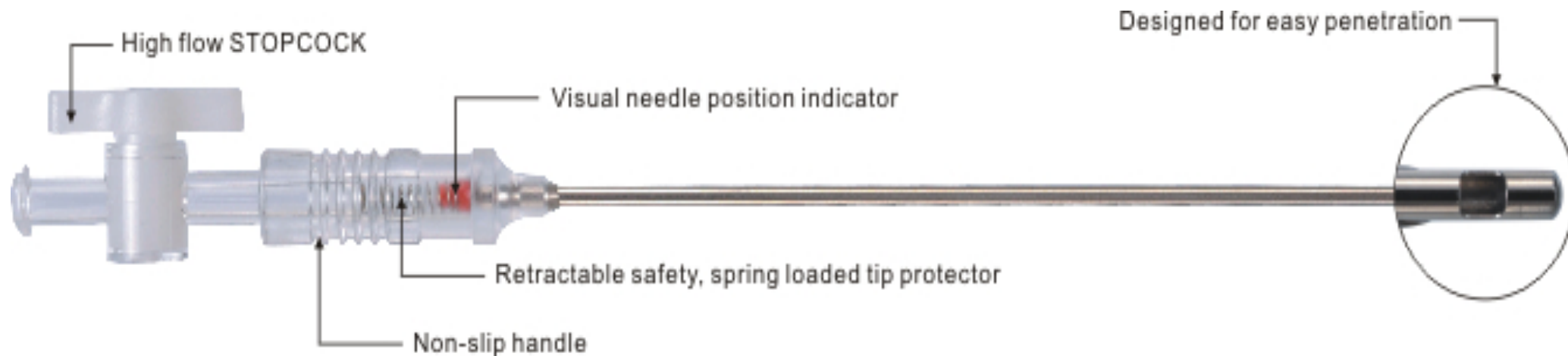
## VERESS NEEDLE (Disposable Insufflation Needle)

- Insufflation needle constituted a safe spring load by the inner and outer double tube.
- Outer tube is beveled and sharp which can puncture the abdominal wall.
- The blunt inner tube has shrinkage, it shrinks into the outer tube when encounter resistance of abdominal wall. And pops up when the resistance disappear to prevent from vessels injuries by sharp outer tube.



## VERESS NEEDLE (Disposable Insufflation Needle)

- Electrolytic polishing outer tube, very smooth, threaded design handle no slip grip.
- 120mm and 150mm lengths have provided different physical needs of patients
- A high mobility piston connects with CO2 tubing border.
- Red buoy design which can easy to show the needle position, readily penetrate.





# Anti-Fog

## Anti-Fog



### DESCRIPTION

The device is bottled in a plastic dropper bottle with a volume of 5 ml . The LAGIS Anti-Fog Solution is terminally sterilized.

### INDICATIONS

Use on endoscopic camera scopes to prevent fog from appearing on the lens, in order to achieve a better visibility during the procedure.

## INSTRUCTION FOR USE

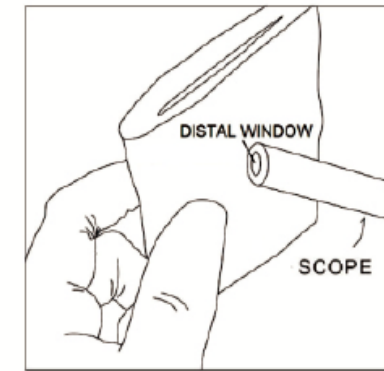
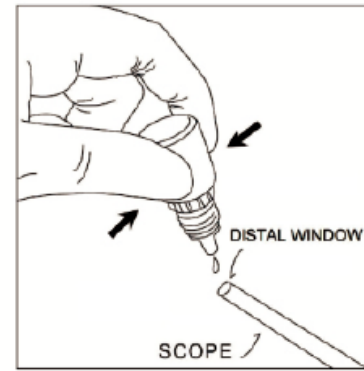
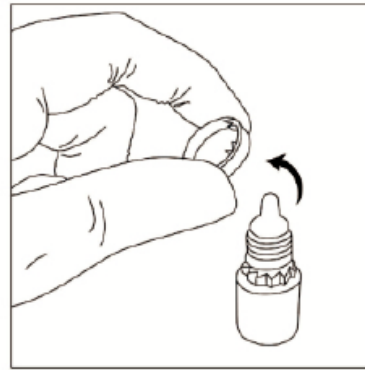
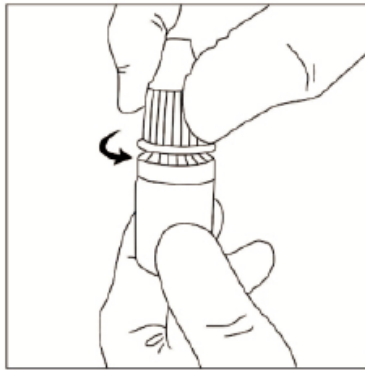


Fig 1. Remove the cap of anti-fog solution

Fig 2. Remove the detachable ring from the bottle of Anti-fog solution.

Fig 3. Apply some drop of Anti-fog solution to distal window of scope.

Fig 4. Blot(do not wipe dry) the distal window of scope with a sterile gauze.

## **WARNINGS AND CAUTION**

These devices are provided STERILE and are intended for use during a SINGLE endoscopic procedure. Reprocessing and/or resterilization of this device may create the risk of contamination and patient infection. DO NOT REUSE, REPROCESS OR RESTERILIZE. For SINGLE use only. DISCARD AFTER USE. DO NOT RESTERILIZE

## **STORAGE CONDITION**

Store at temperature between 0°C and 40°C in clean place, away from moisture and sunlight.

## Competitor- LiNA



## Competitor- LiNA



*LiNA Clear Sight Wipe*



*LiNA Elfred*



*LiNA Clear Sight*

### Ordering Information:

LiNA Anti-fog solutions **CE** 0459

REF.	Product	Packing
CS-20	<b>LiNA Elfred</b> - standard, single use.	Box of 30, sterile
CS-20A	<b>LiNA Elfred</b> - with 4% alcohol, single use.	Box of 30, sterile
CS-30	<b>LiNA Clear Sight</b> - standard, single use.	Box of 20, sterile
CS-30A	<b>LiNA Clear Sight</b> - with 4% alcohol, single use.	Box of 20, sterile
CS-40	<b>LiNA Clear Sight Wipe</b> - standard, single use.	Box of 30, sterile

## Competitor- Dr. Fog

- Dr. Fog



WHEN IT COMES TO SURGICAL PROCEDURES,  
**INSIST ON CLARITY.**

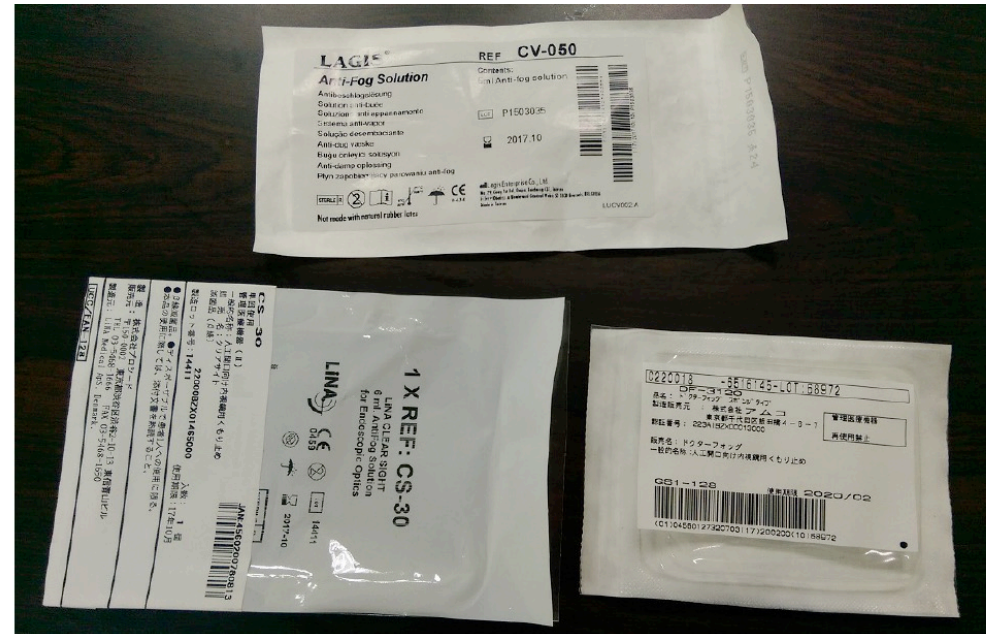
**Dr. Fog®**  
Anti-Fog Products for uninterrupted endoscopic procedures



- [http://www.aspensurgical.com/Store\\_CategoryProducts.aspx?cid=63CC801E0211BAC4](http://www.aspensurgical.com/Store_CategoryProducts.aspx?cid=63CC801E0211BAC4)

## 各廠牌防霧液防霧功能比較測試

樣品：	LAGIS*2	LOT:P1503035	EXP:2017.10
	LINA*2	LOT:14411	EXP:2017.10
	DR. FOG*2	LOT:68972	EXP:2020.02



LAGIS

LINA

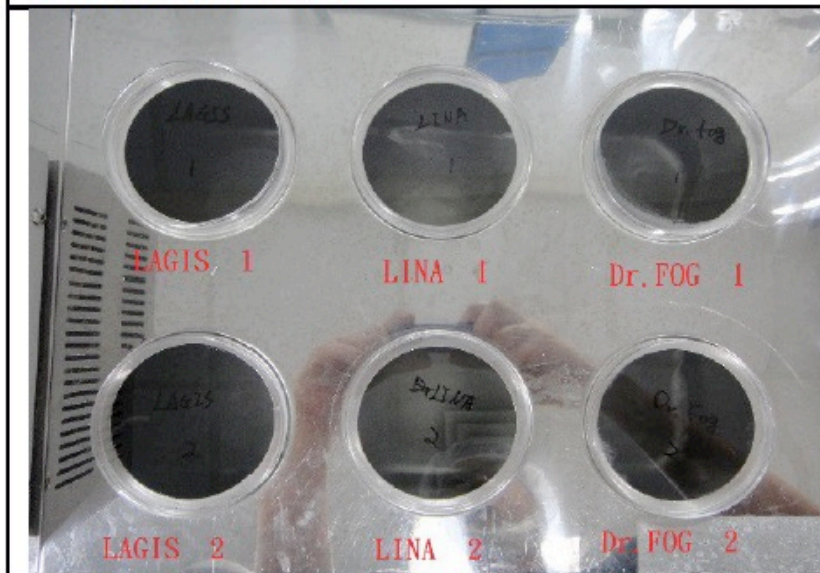
Dr.Fog

LAGIS

LINA

Dr.Fog

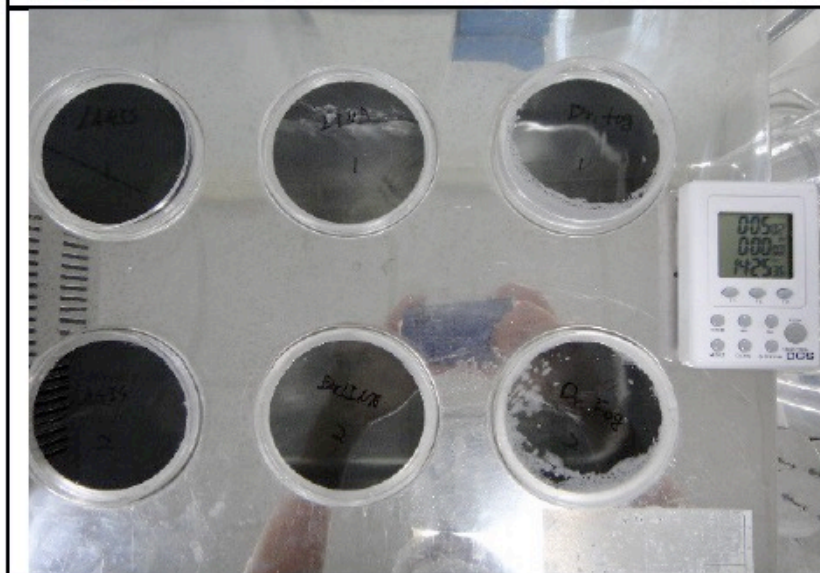
0 分鐘時對照圖



1 分鐘



5 分鐘



10 分鐘



LAGIS

LINA

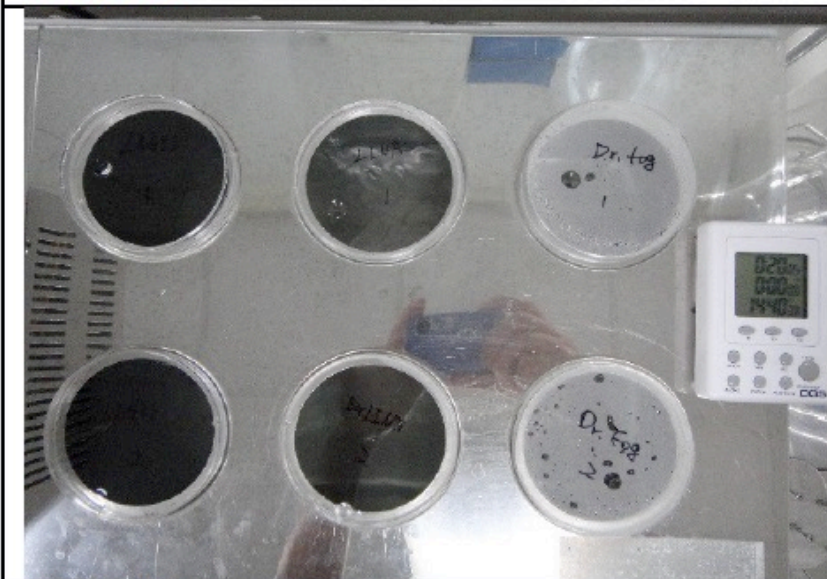
Dr.Fog

LAGIS

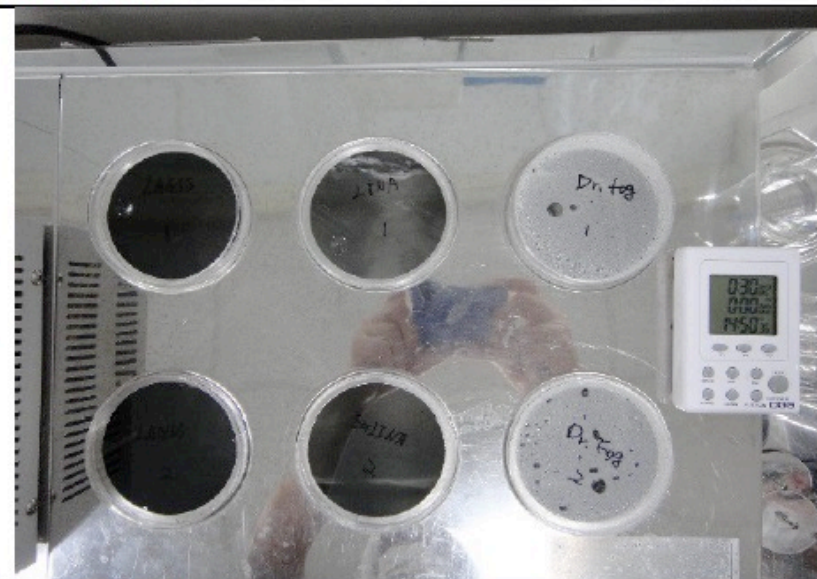
LINA

Dr.Fog

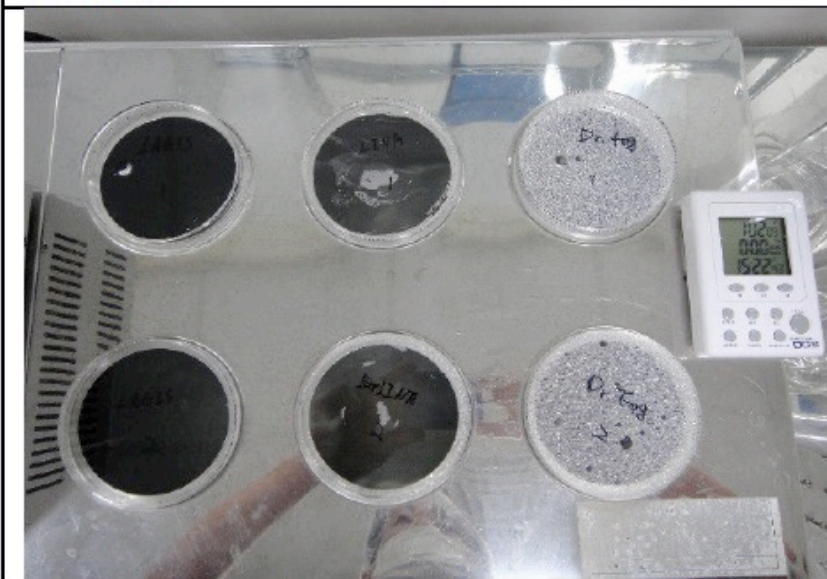
20 分鐘



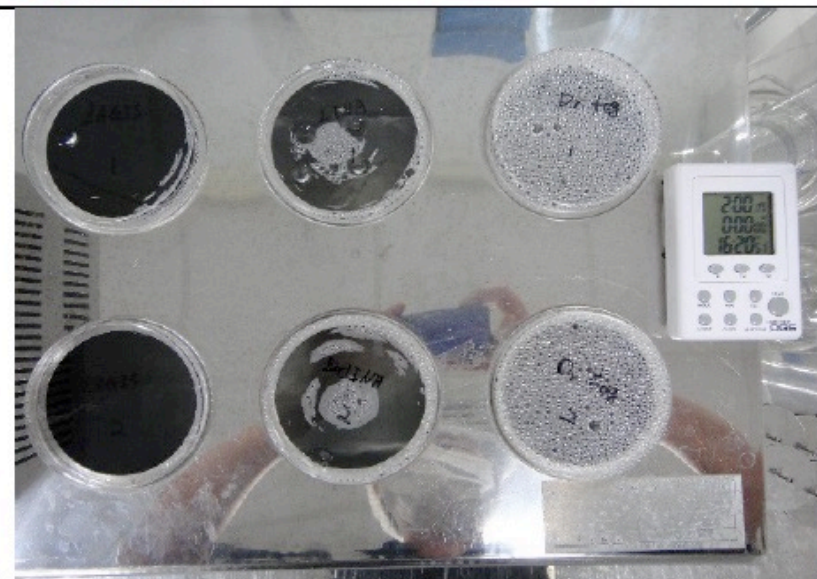
30 分鐘



60 分鐘



120 分鐘



Thank you